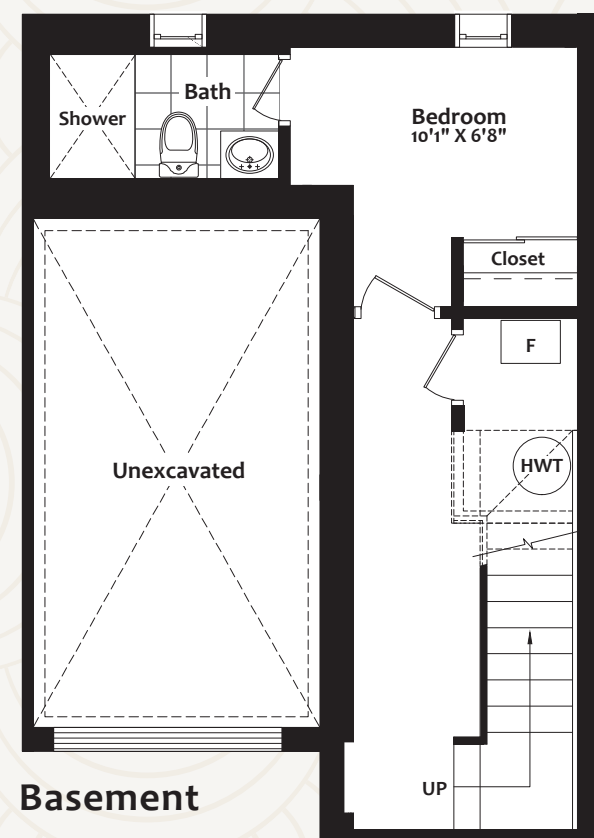




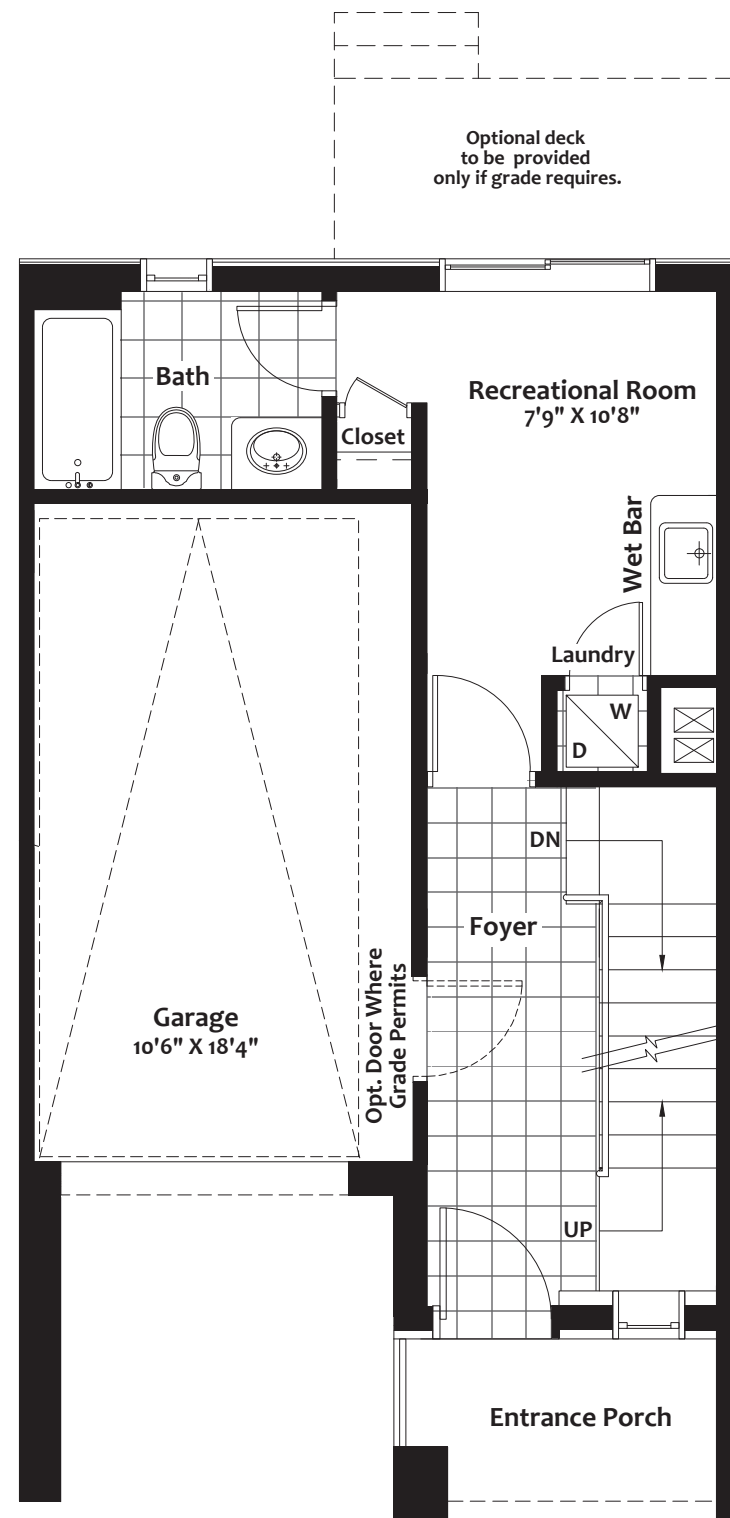
the Pine

1,804 sq.ft. Plus Finished Basement

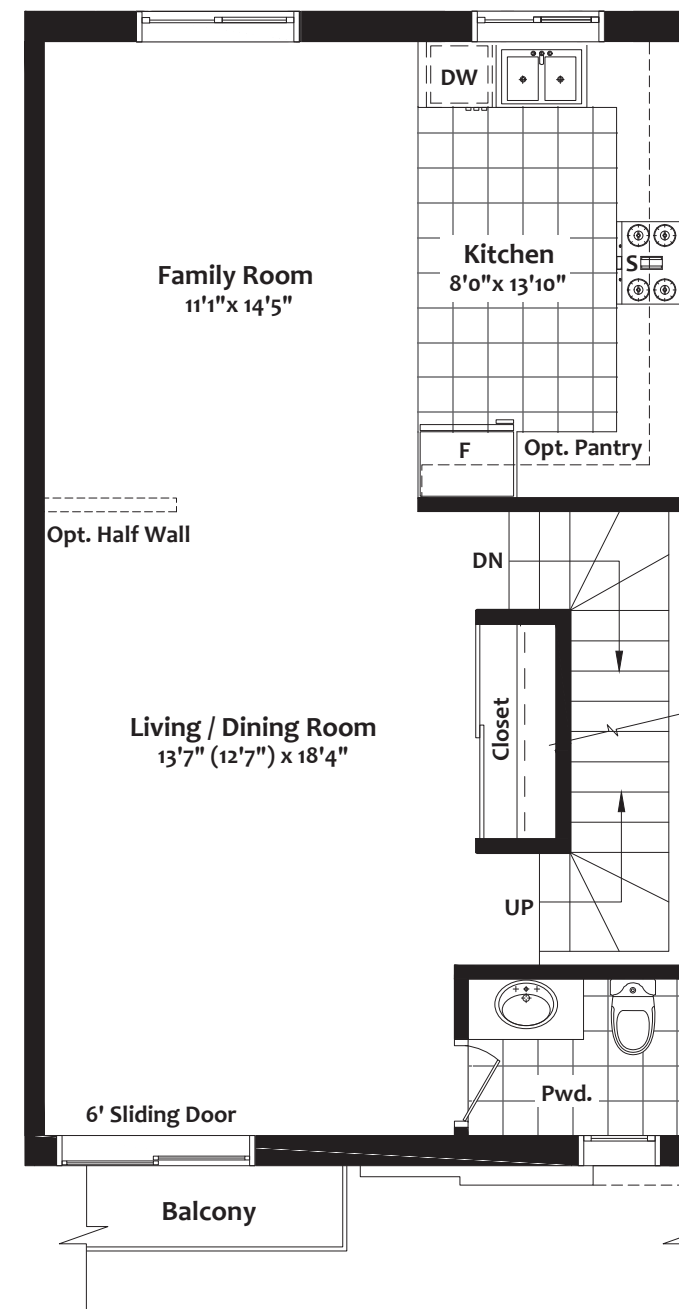
3 + 1 BEDROOMS / 4.5 BATHROOMS



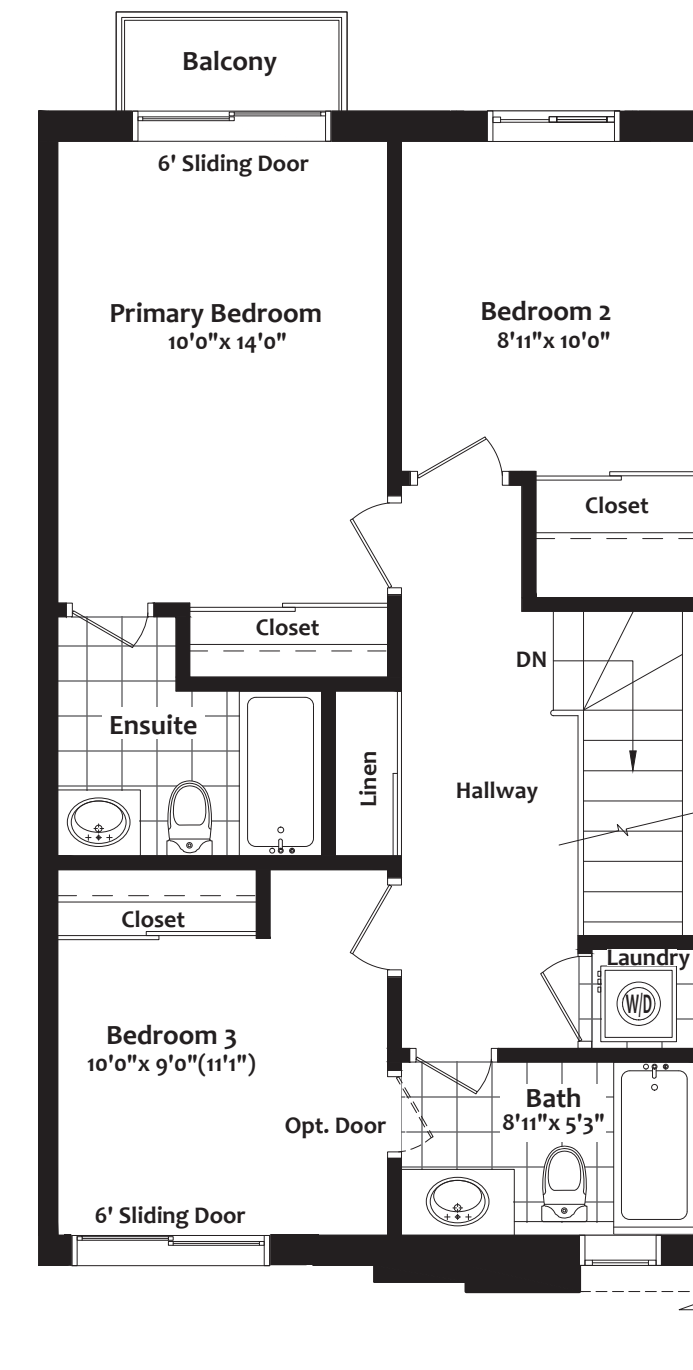
Basement



Main Floor
Block 6 & 2



Second Floor



Third Floor

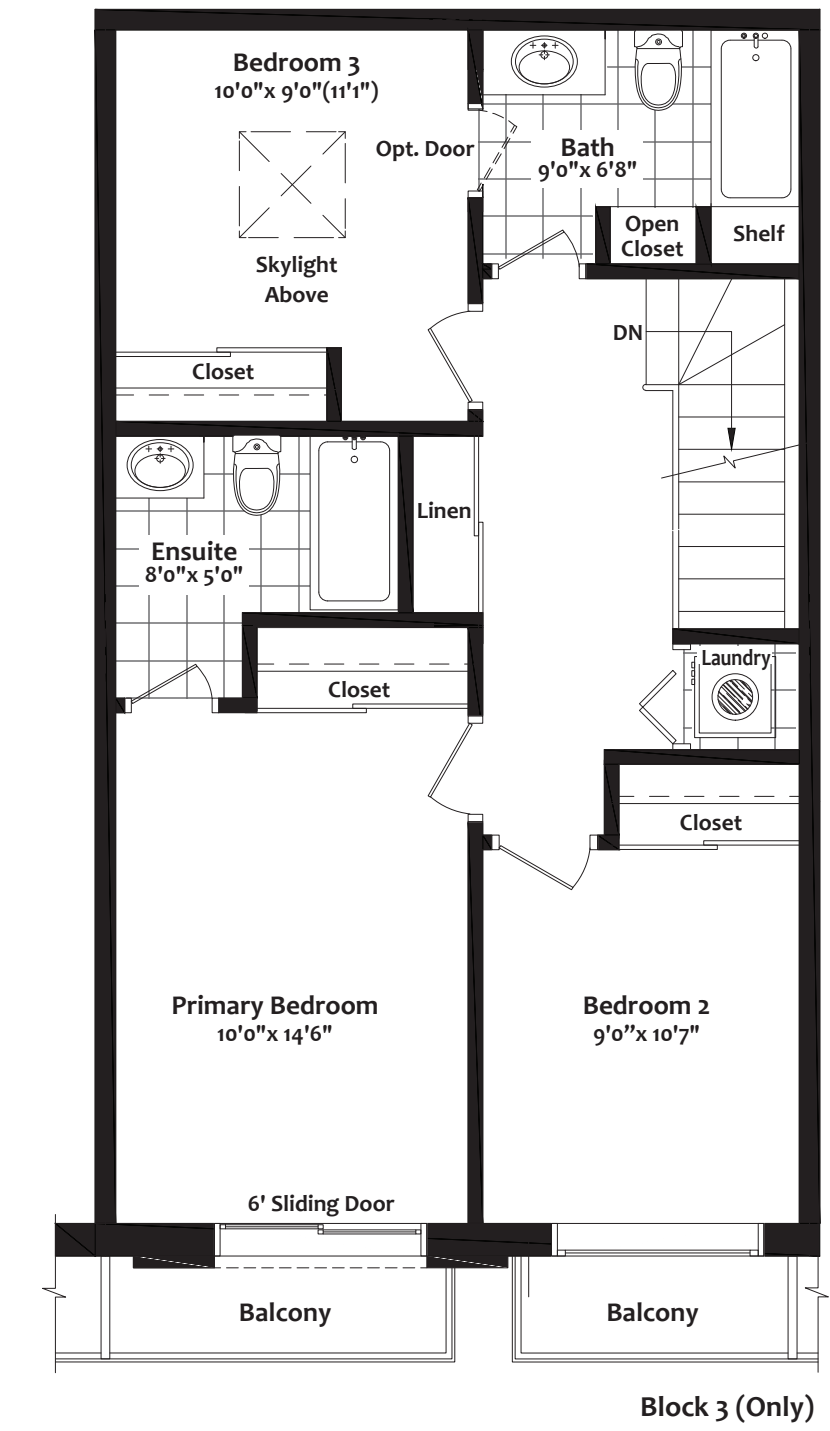
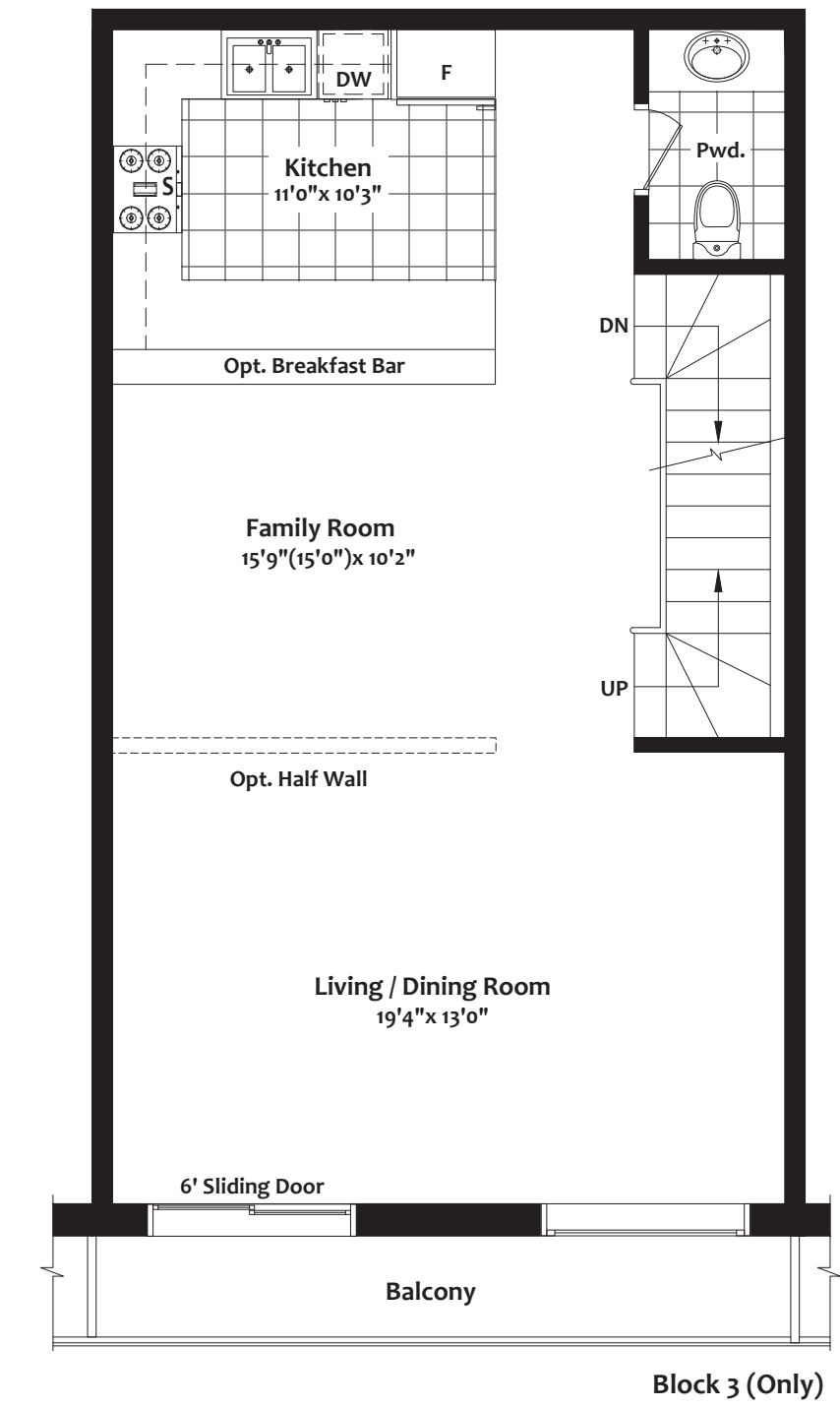
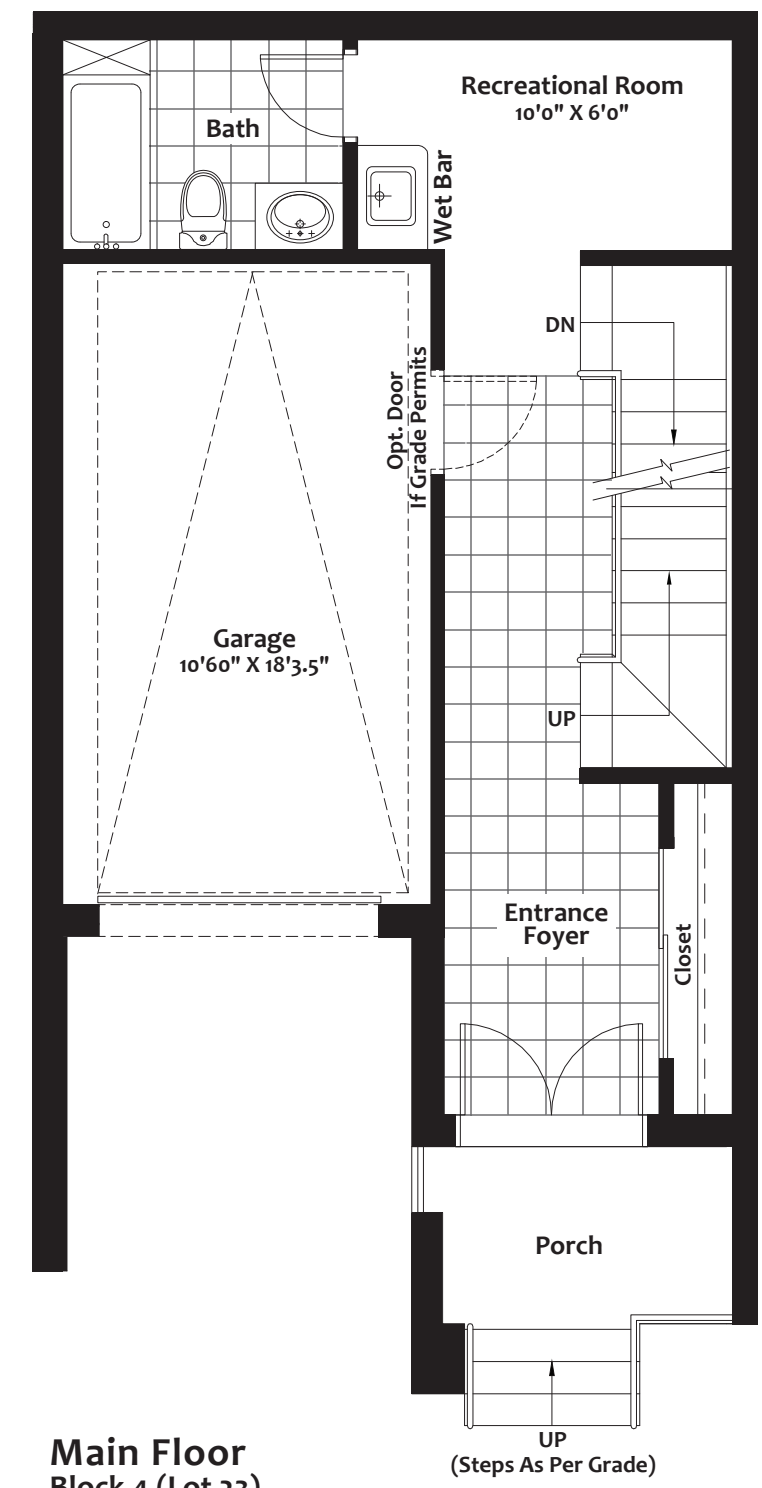
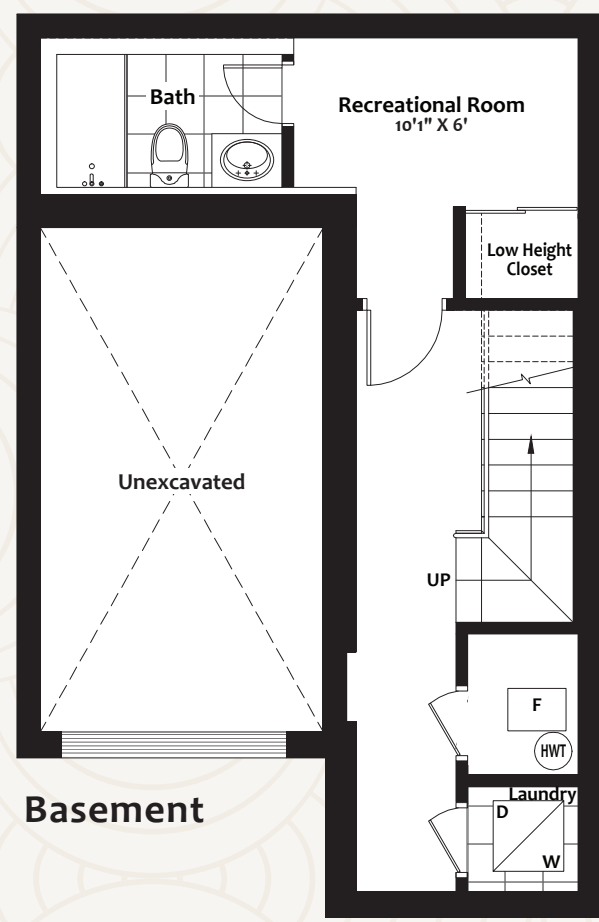


HILLSVIEW
TOWNS

the Birch

1,802 sq.ft. Plus Finished Basement

3 BEDROOMS + REC ROOM / 4.5 BATHROOMS



Renderings are artist's concept. All dimensions are approximate and subject to normal construction variances. Dimensions may exceed the useable floor area. Sizes and specifications subject to change without notice. E.&O.E. Hillsview Towns. All rights reserved. May 2025.

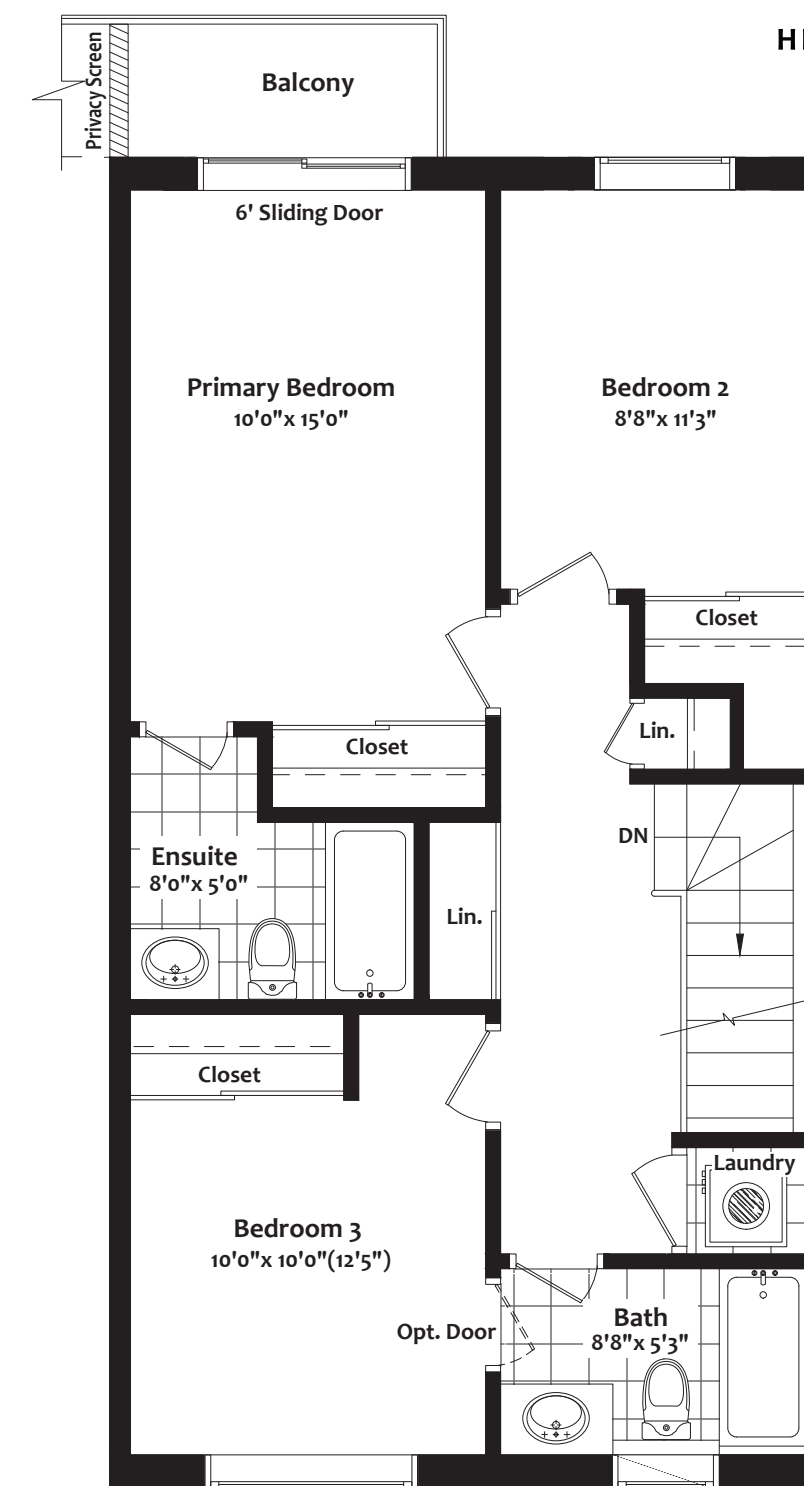
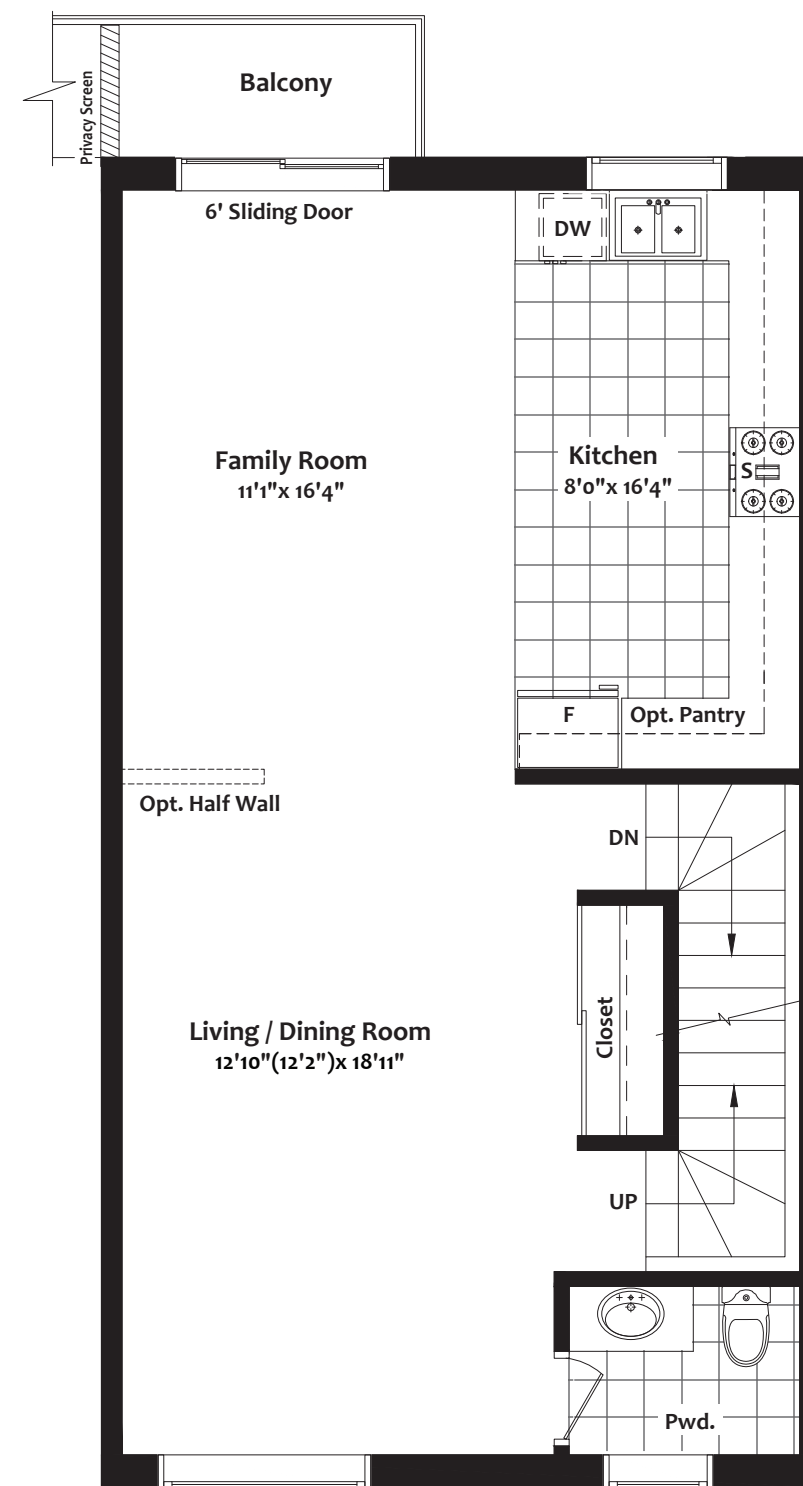
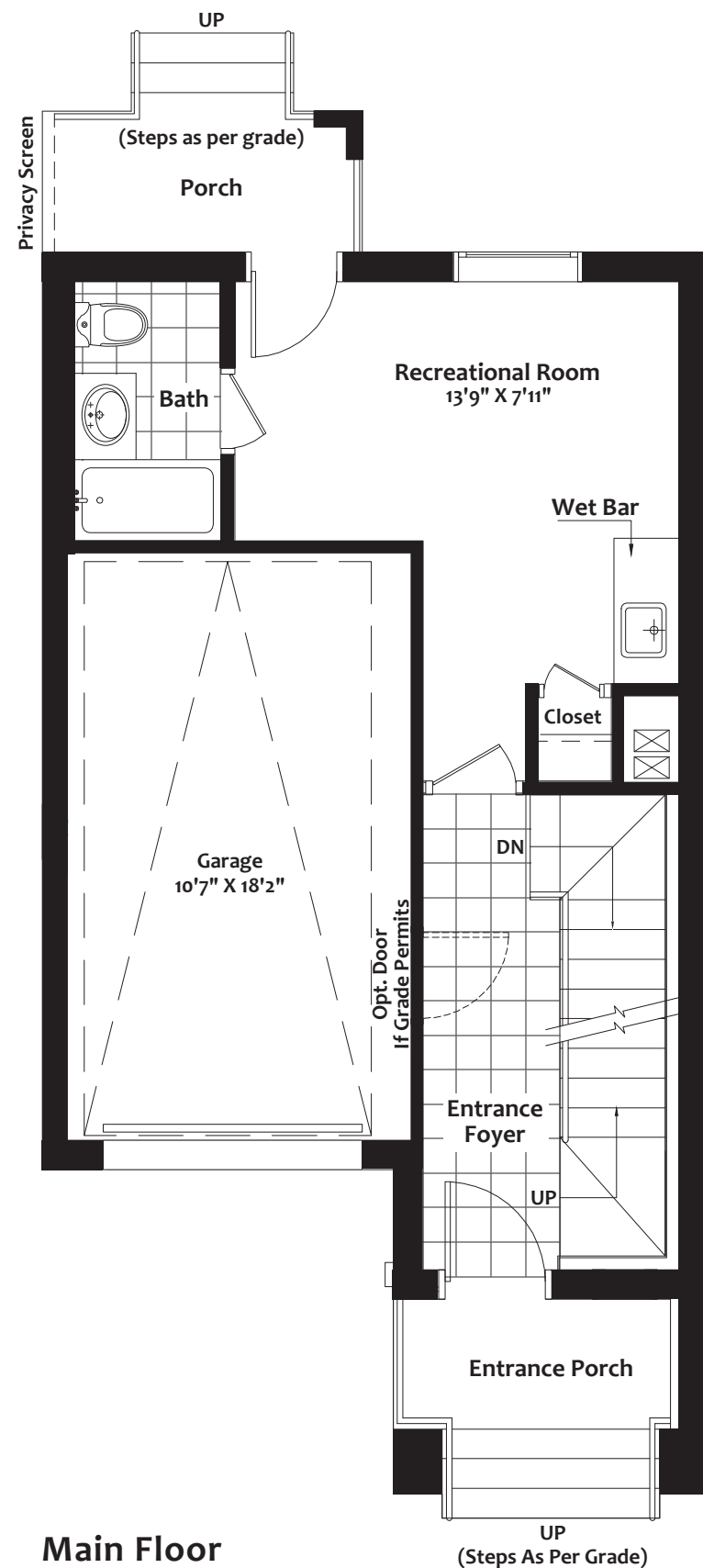
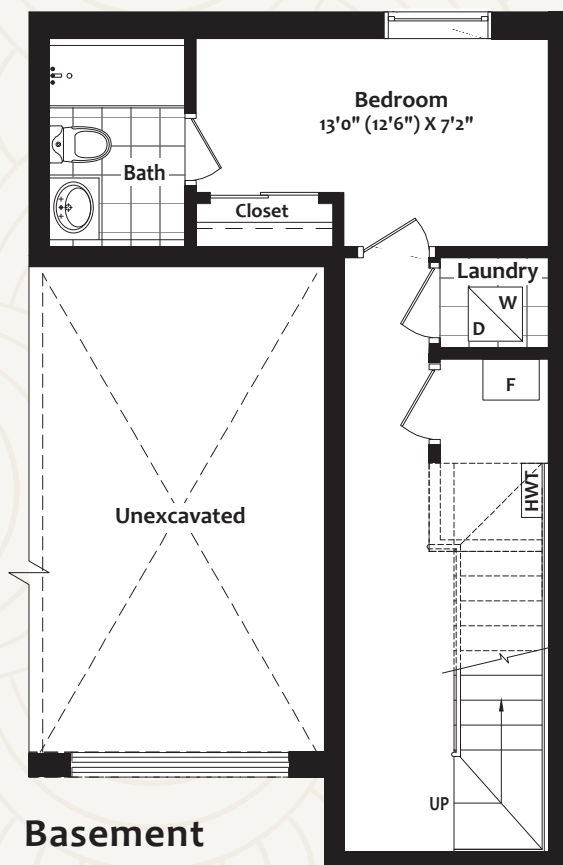
Type E



the Willow

1,927 sq.ft. Plus Finished Basement

3 + 1 BEDROOMS / 4.5 BATHROOMS

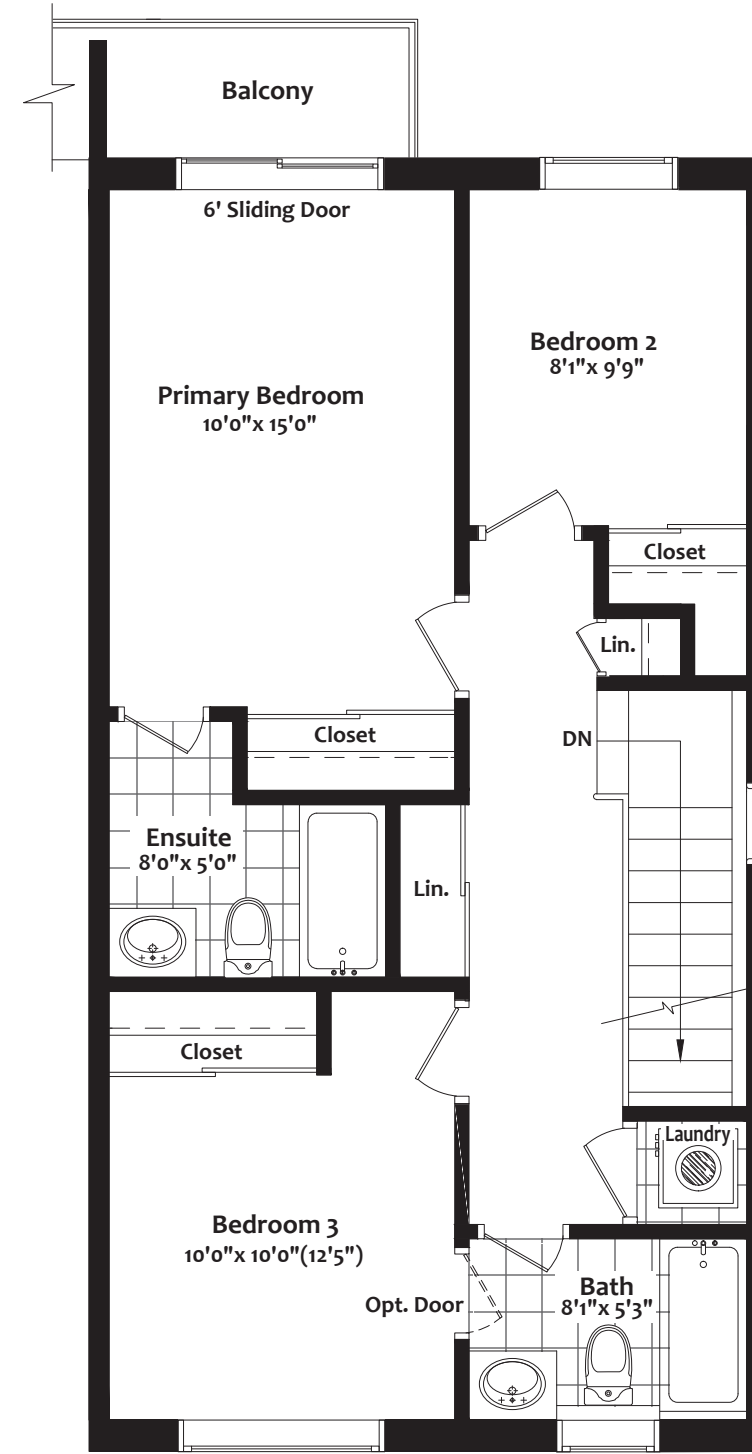
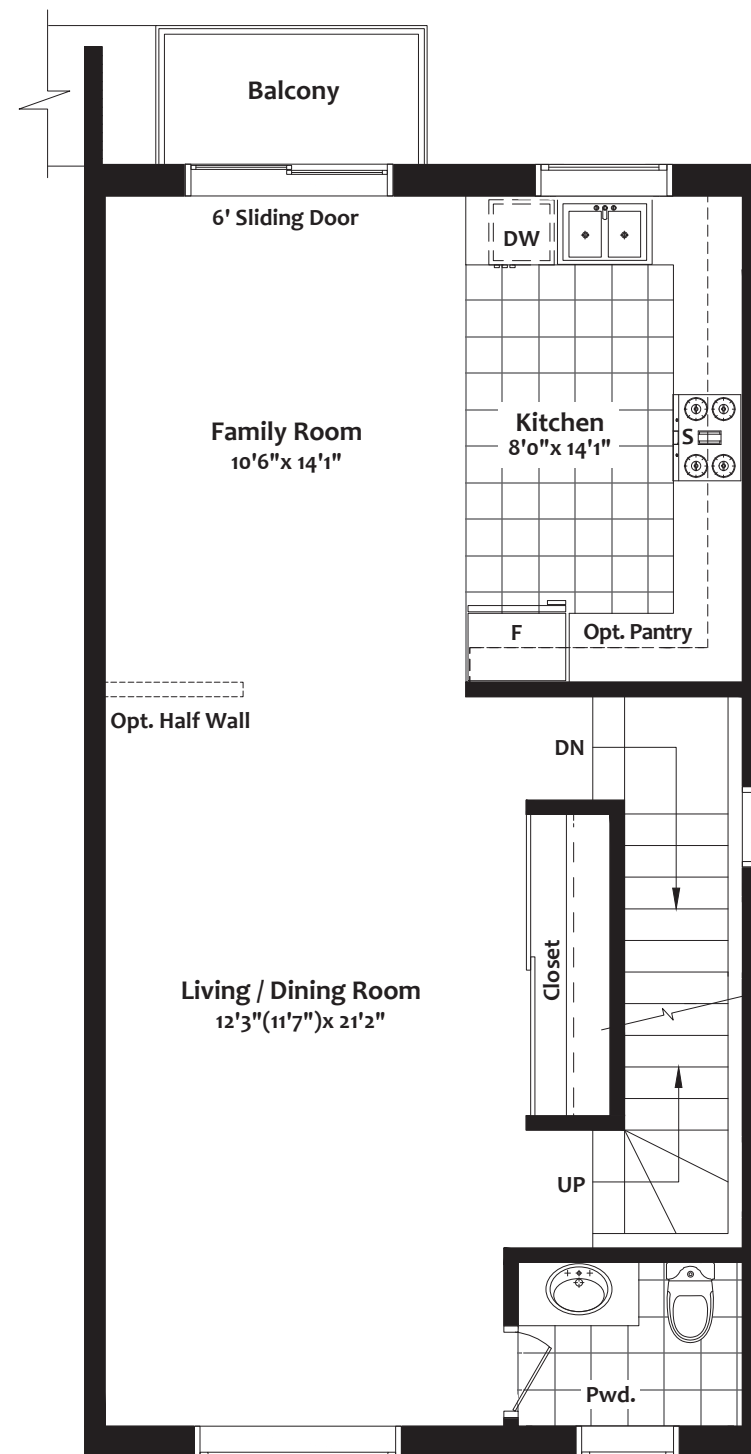
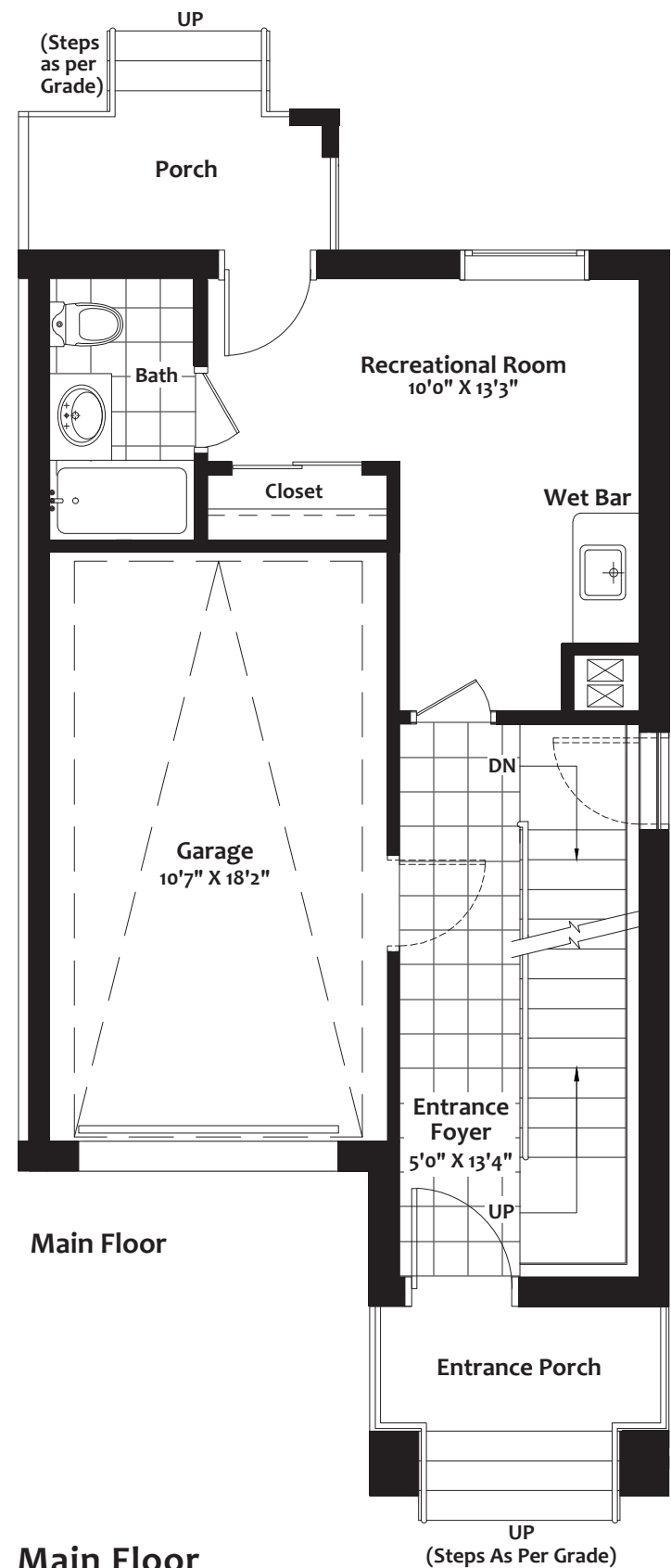
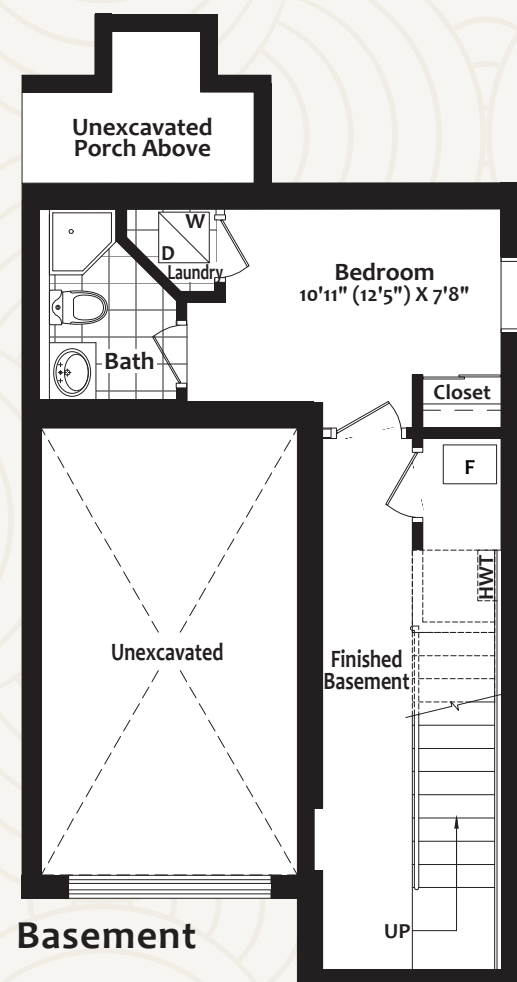




the Aspen

1,929 sq.ft. Plus Finished Basement

3 + 1 BEDROOMS / 4.5 BATHROOMS



Renderings are artist's concept. All dimensions are approximate and subject to normal construction variances. Dimensions may exceed the useable floor area. Sizes and specifications subject to change without notice. E.&O.E. Hillsview Towns. All rights reserved. May 2025.

Type J